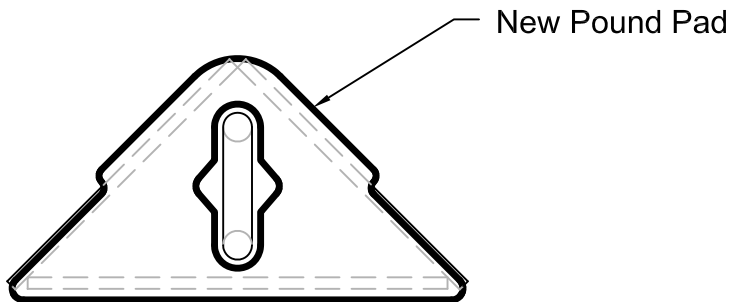
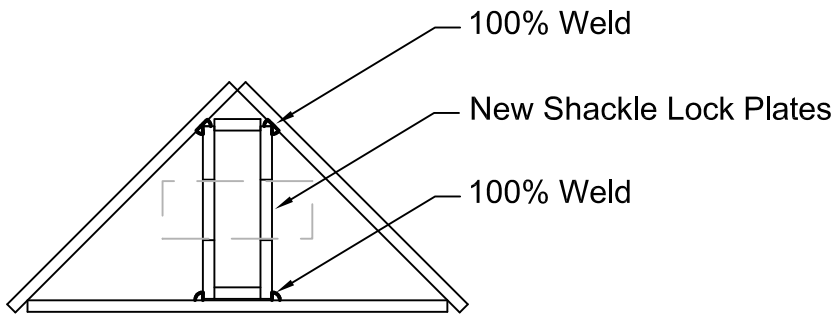
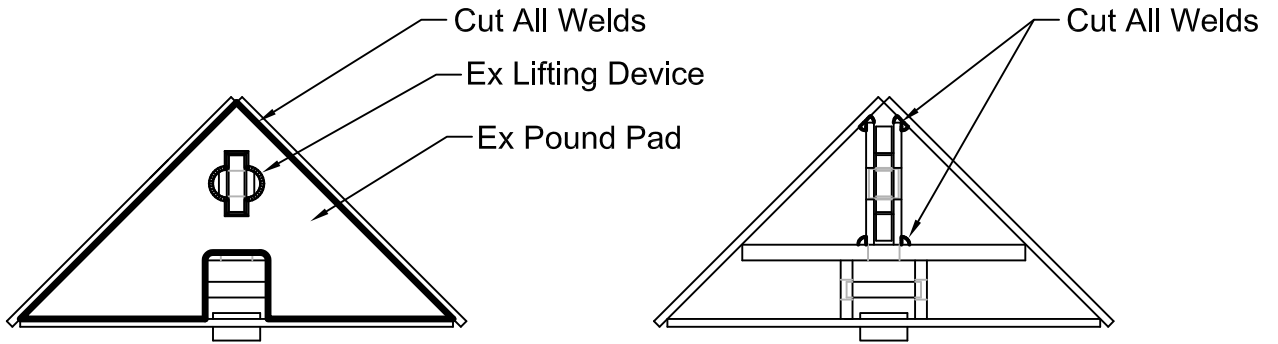


Corner Post

1. Cut-Off Old Pound Pad.
2. Inspect Lifting Device
3. Weld on New Pound Pad 100%



Subject To
Engineering Approval.

All Information Included Or Referenced
Herein Shall Be Treated As Confidential
To Pro-Tec Equipment © 2014



PRO-TEC Equipment
4837 W. Grand River Ave. Lansing, MI 48906 (517) 827-3250 1-800-292-1225

Customer: ~	Page 1 Of 1
DWG. # Slide Rail Repair Procedure-New Corner Post Lifting Device	
Date: 05-June-2017	By: FM

Slide Rail Panel Repair Procedure