



PRO-BRACE HYDRAULIC FRAME



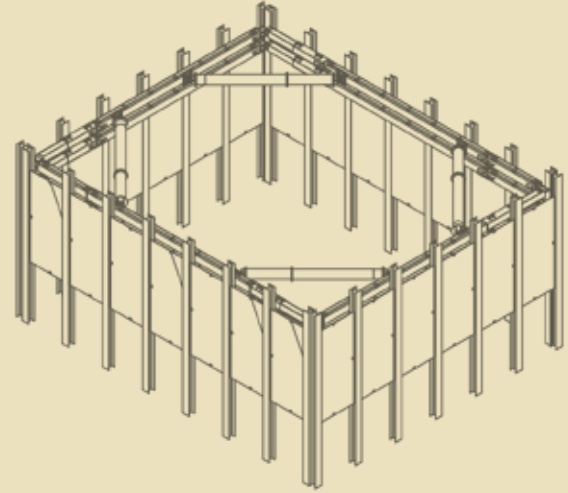
THE LEADING PRODUCER & DISTRIBUTOR OF TRENCH SHIELDING & SHORING EQUIPMENT SINCE 1995

Pro-Tec Equipment Pro-Brace Hydraulic Frame

What is the Pro-Brace Hydraulic Frame?

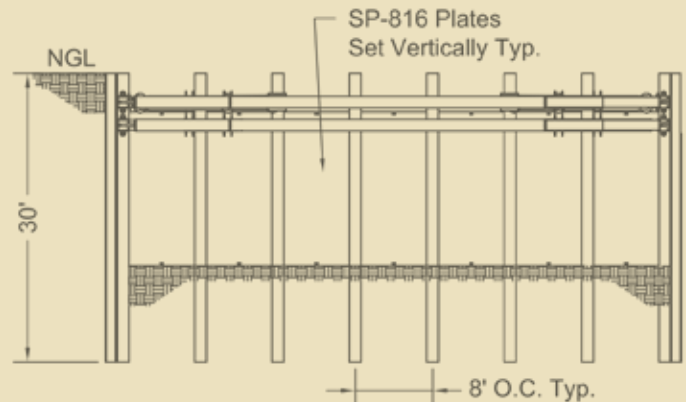
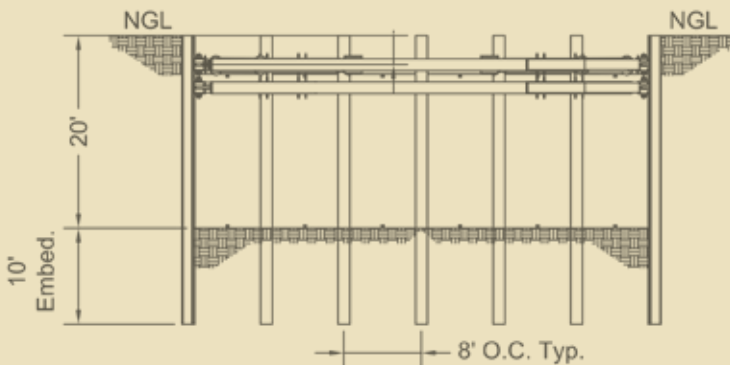
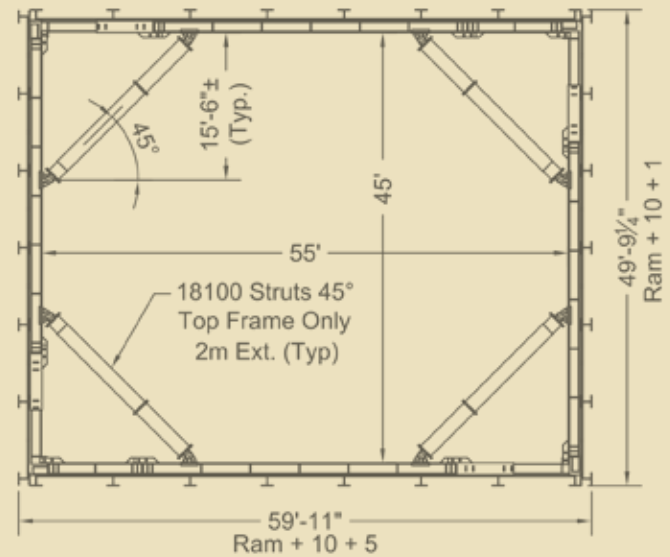
The Pro-Brace Hydraulic Frame is designed and engineered to enable users to save time and money during the installation and removal process, when compared to traditional cut and weld frame projects.

Consisting of an enclosed hydraulic ram and static extensions, the Pro-Brace Hydraulic Frame is able to provide safe working areas in excavations from 9'9" to 75'5" in length and width.* In many cases, due to jobsite conditions, the clearspan capabilities of the system are limited and require a center or corner strut. With the inclusion of hydraulic struts, the maximum width of the excavation will be determined by an engineer while the length of the system is virtually limitless.

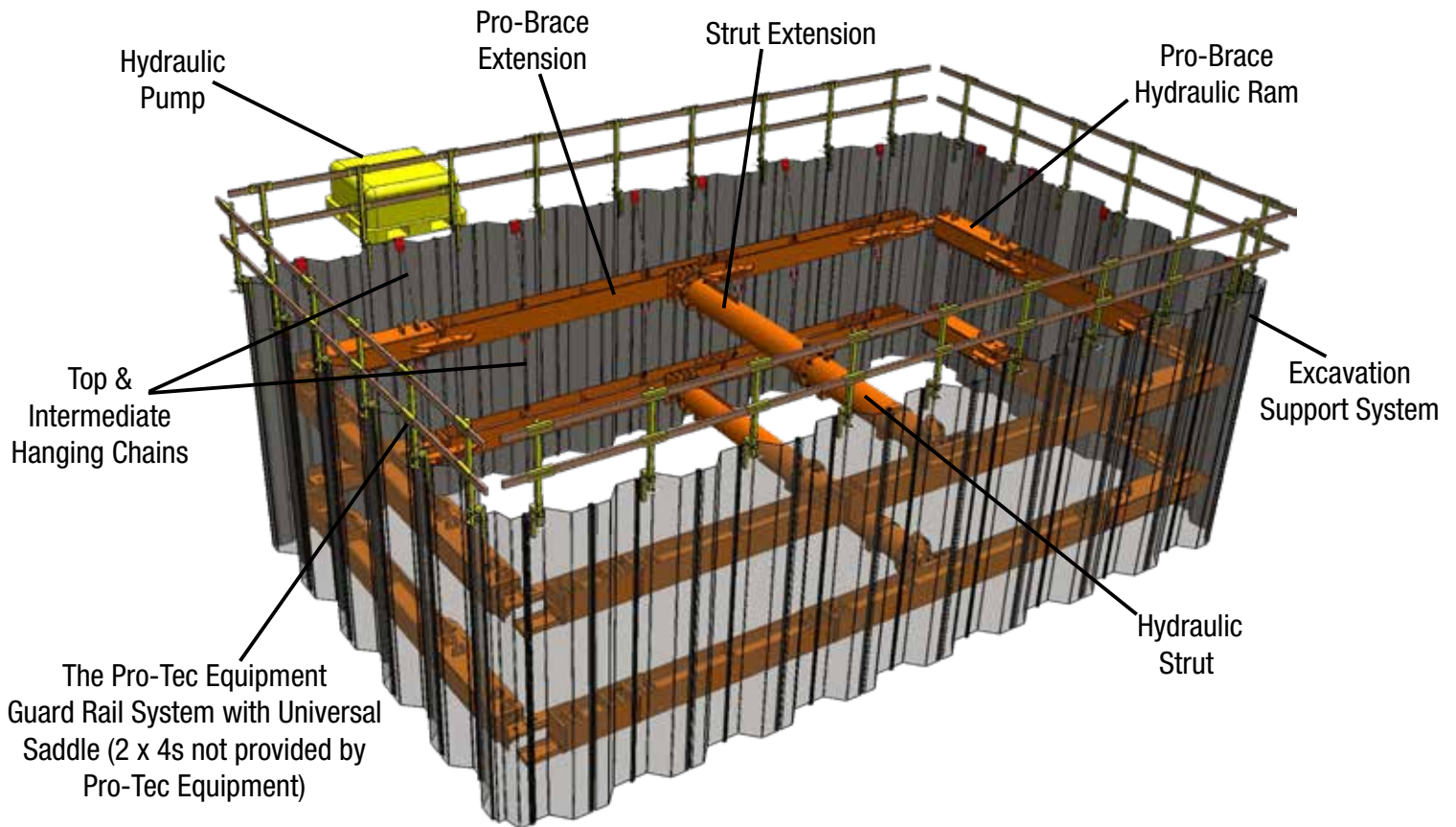


When to use the Pro-Brace?

Excellent for projects such as; bridge footings, tank installations, Cast-In-Place projects and a myriad of other large excavations projects, the Pro-Tec Equipment Pro-Brace Hydraulic Frame has an optimal working depth from 12' to 30'. With the overall capacity of the system able to achieve depths greater than 30'!



*Site-specific engineering is required on all Pro-Brace projects. A Registered Professional Engineer will determine the number of braces, spacing and allowable system depth, based upon soil and jobsite conditions.



THE PRO-BRACE HYDRAULIC RAM

A 6" aluminum dual-acting cylinder encased in steel box tubing, the ram provides an operating range of 9'8" (2.9m) to 13'1" (3.9m). The adjustability of the Pro-Brace enables a variety of excavation shapes to be safely shored.

THE HYDRAULIC STRUT

The Hydraulic Strut (available in multiple capacities), allows the complete system to achieve larger standard and custom sized projects.

TOP & INTERMEDIATE HANGING CHAINS

The Hanging Chains act as a fail-safe if the system were to lose pressure and the Intermediate Chain are used for projects requiring multiple levels of rams.*

THE PRO-TEC EQUIPMENT GUARD RAIL SYSTEM

Serving as an extra precautionary measure, providing temporary railing around excavations and trenches.

THE PRO-BRACE EXTENSION

Paired with the Pro-Brace Hydraulic Ram, the extension is a static component that allows for an array of lengths. Available lengths include:

- 3'3" (1m)
- 4'11" (1.5m)
- 9'10" (3m)
- 16'4" (5m)
- 22'11" (7m)
- 32'9" (10m)

THE STRUT EXTENSION

Designed to be used in conjunction with the Hydraulic Strut, the Strut Extension provides extra length, when needed.

HYDRAULIC PUMP

A gas powered, dual-acting pump capable of producing 2,500 psi in both directions. The Hydraulic Pump includes 30' long hoses with quick disconnect sockets.

EXCAVATION SUPPORT SYSTEM

The Pro-Brace is designed to use variety of approved shoring components (sheet pile, beam and plate), increasing the overall usability.

GENERAL INSTALLATION INSTRUCTIONS

INSTALLATION

General Installation Steps

These steps are a guideline. Every project is going to differ from the last and may require a different way to install.



Dig initial pilot cut (2-3') and stage one leg of the Pro-Brace Hydraulic Rams. If using multiple levels of rams, they may be stacked upon each other to speed up installation time.*



Assemble initial ram and extensions. If using multiple levels of rams, assemble the rams and extensions and stack on top.*



With top level assembled, begin placement of excavation support systems.



With all supports installed, connect the top level of the Pro-Brace to the bracing supports with Hanging Chains and pressurize system.



If using multiple levels, excavate to next ram spacing and pressurize system.* Repeat until all rings are installed and pressurized.



With all rams in place, excavate down to project depth.*

HYDRAULIC PUMP SPECS



Unit Specs

- Fork lift pockets and top crane lifting lug
- Removable five sided expanded metal cage
- Double acting hydraulic control valve with two quick-disconnect ISO Series A plugs
- 2500 psi working pressure, both directions
- Pressure gage
- Hose and tool storage pocket
- Hydraulic hose assembly - 30' (9.1m) long with two hoses and four quick-disconnect ISO Series A sleeve-lock sockets
- Cylinder shut-off valve tool (T-handled ½" socket)
- Weight – 490 lbs

Engine

- Honda GX 270 - 270cc
- Net power approx. 8 HP (5.9KW)
- Electric and recoil start
- Fuel capacity – 1.4 US gal (5.3L)

Hydraulic Pump

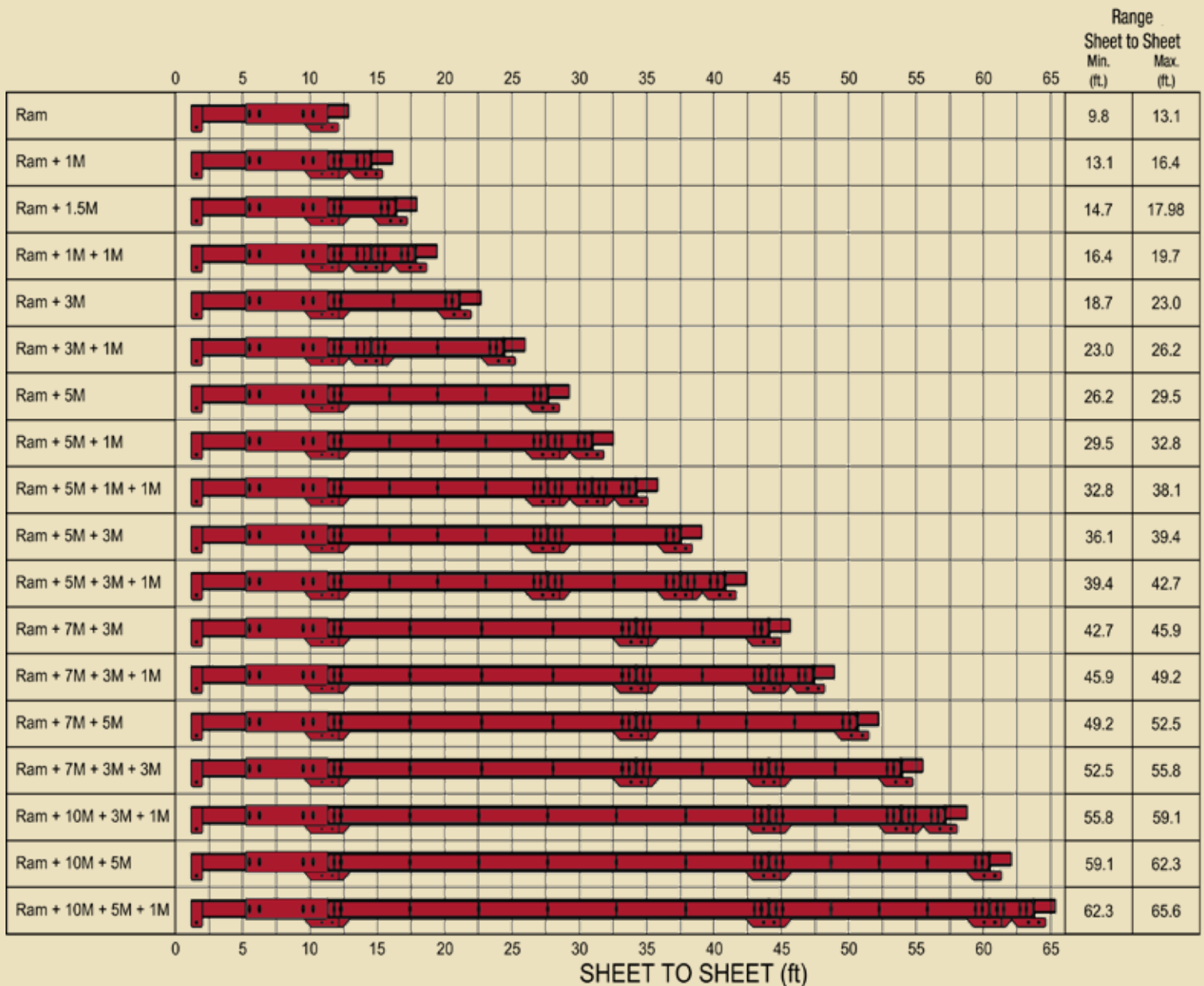
- Pressure – Pro Model 3SPX30G11
- 3,000 psi & 3.0 gpm (11.36 lpm)

Shoring Fluid Tank

- Tank capacity – 16 gal (60.5L)
- Low shoring fluid engine shut-off switch
- In-tank filter
- Fluid sight gage
- Tank drain valve
- Over flow drain valve and hose
- Fill cap with filter screen
- Large removable clean out cap

PRO-BRACE CONFIGURATIONS

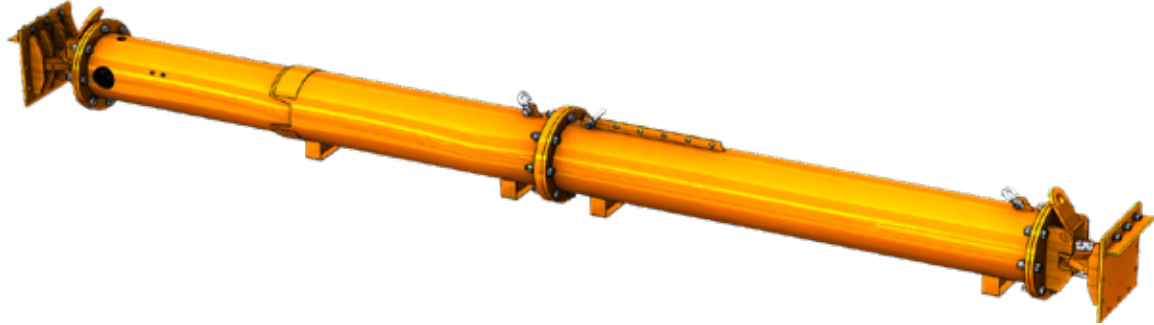
The Pro-Brace Ram, a dual acting 45-Ton capacity hydraulic system and the static extensions, enable connections that allow for a wide range of widths and lengths combinations. The chart below shows examples of ram and extension combinations and the lengths they achieve. Note, the chart shows just a sampling of the combinations, other combinations can be done to provide desired width.



*Site-specific engineering is required on all Pro-Brace projects. A Registered Professional Engineer will determine the number of braces, spacing and allowable system depth, based upon soil and jobsite conditions.

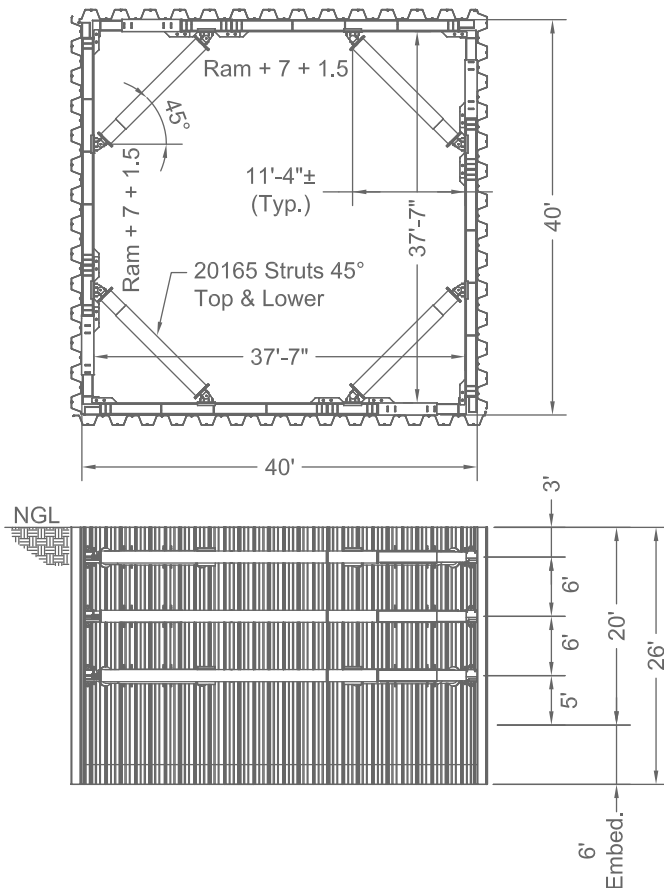
HYDRAULIC STRUT

center or corner brace on large projects



Available in 100T and 165T models, the Hydraulic Strut, when used in conjunction with the Pro-Brace System, enables large and custom sized projects to be completed with relative ease.

Both strut options contain dual acting hydraulic struts, providing exacting adjustments and swivel end attachments, enabling them to be used as either a center strut or a corner strut.



18-100T Strut & Extensions

18" 100T Capacity Hydraulic Strut

Model	Description	Length	Weight (lb.)
18-100T	100T Strut	9'3" (2.8m) - 13'1" (4m)	2885
18-1	1 Meter Extension	3'3" (1m)	400
18-1.5	1.5 Meter Extension	4'11" (1.5m)	515
18-2	2 Meter Extension	6'6" (2m)	635
18-3	3 Meter Extension	9'10" (3m)	865
18-6	6 Meter Extension	19'8" (6m)	1730

20-165T Strut & Extensions

20" 165T Capacity Hydraulic Strut

Model	Description	Length	Weight (lb.)
20-165T	165T Strut	11'8" (3.56m) - 15'7" (4.76m)	5955
20-.5	.5 Meter Extension	1'7" (.5m)	380
20-1	1 Meter Extension	3'3" (1m)	515
20-2	2 Meter Extension	6'6" (2m)	770
20-4	4 Meter Extension	13'1" (4m)	1315
20-8	8 Meter Extension	26'3" (8m)	2350

Strut weight includes Swivel attachment



PRO-TEC EQUIPMENT

4837 West Grand River Ave
Lansing, MI 48906
Phone: 1-800-292-1225
Fax: (517) 827-3263
www.pro-tecequipment.com

The information in this brochure is presented in good faith to assist the user in determining whether our products are suitable for his/her application. No warranty or representation, however, is intended or made, nor is protection from any law or patent to be inferred, and all patent rights are reserved. Job site photos are strictly intended for general product information only and may not comply with all applicable safety standards. Always refer to manufacturer's specific tabulated data, O.S.H.A. 29 CFR 1926 Subpart P for excavation and all applicable safety standards prior to each use. ©2018 Pro-Tec Equipment. All rights reserved.

ARCOSA
SHORING PRODUCTS