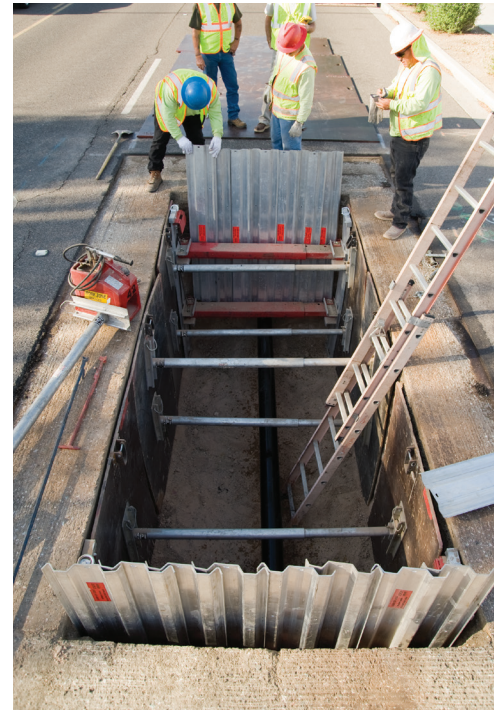
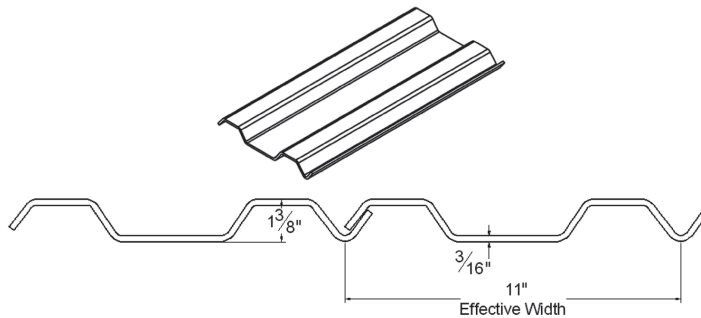




ALUMINUM OVERLAP SHEET PILE

Pro-Tec Equipment's Aluminum Overlap Sheet Pile (non-watertight) is a lightweight overlap sheet pile. It is designed to be used as bulk heading for closing off any open sides of an aluminum trench shield.

- Easily transported
- Overlap design allows easy installation



Engineering Data	
Area	A = 2.871in ²
Moment of Inertia (Per Sheet)	I = 0.689in ⁴
Section Modulus (Per Sheet)	S = 0.994in ³
Radius of Gyration (Per Sheet)	R = 0.490in
Yield Strength	Aluminum (6061-T6)

Model	Length	Weight (Lb.)
AOLS-60	5'	16
AOLS-72	6'	19
AOLS-96	8'	25
AOLS-120	10'	31
AOLS-144	12'	37

Consult registered professional engineering for site specific design prior to use.



PRO-TEC EQUIPMENT

4837 West Grand River Ave
 Lansing, MI 48906
 Phone: 1-800-292-1225
 Fax: (517) 827-3263
www.pro-tecequipment.com

The information in this brochure is presented in good faith to assist the user in determining whether our products are suitable for his/her application. No warranty or representation, however, is intended or made, nor is protection from any law or patent to be inferred, and all patent rights are reserved. Job site photos are strictly intended for general product information only and may not comply with all applicable safety standards. Always refer to manufacturer's specific tabulated data, O.S.H.A. 29 CFR 1926 Subpart P for excavation and all applicable safety standards prior to each use. ©2019 Pro-Tec Equipment. All rights reserved.

ARCOSA
 SHORING PRODUCTS